

Tel.: +598 2401 0444 | +1 305 328 3889 | +1 305 424 1494

www.cartrackgps.com | info@cartrackgps.com



iTrackPro ADVANCE

ITG ADVANCE

It is a robust device, easy to install, completely hidden that integrates GPS, GPRS and SMS, in a compact design for real time tracking. Creative device perfect for vehicle safety, big vehicle fleets tracking, logistics and recovery.

Its GPS module is included which allows to get data with perfect accuracy and it uses its GSM function to send the information to a preconfigured cellphone or server, in real time. Its internal memory allows to store GPS coordinates in zones where the GSM coverage is zero, configured in time intervals per the user.

Its optional remote hearing allows to install a hidden microphone to pay attention to what is happening inside the vehicle.

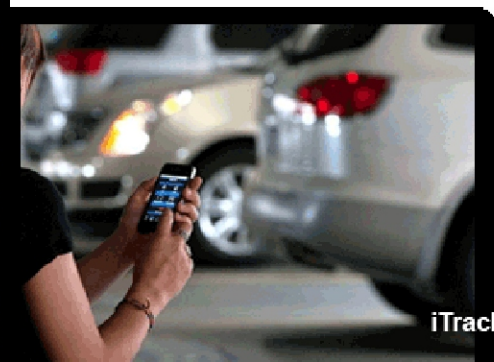
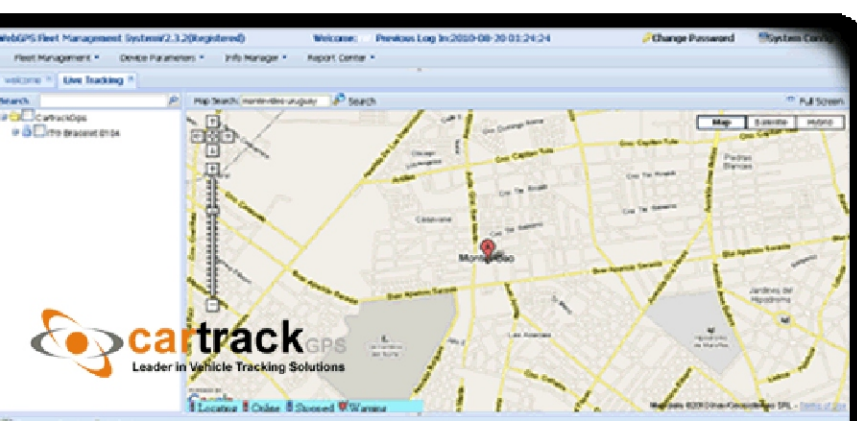
It counts with free technical support and with 2 years warranty against factory failure. Training option is available with this device.

Featured Details

Datalog 256000 Points. Right-Angled Geofence. It stores when there is no coverage. Report per turn (1-360°). Report per missed call. It sends SMS with GoogleMaps link. Accessories: Temperature Sensor, Fuel Sensor, Weight Sensor, Two way voice communication.

WEB TRACKING Real Time Solution

Location, Recovery and Fleet Management



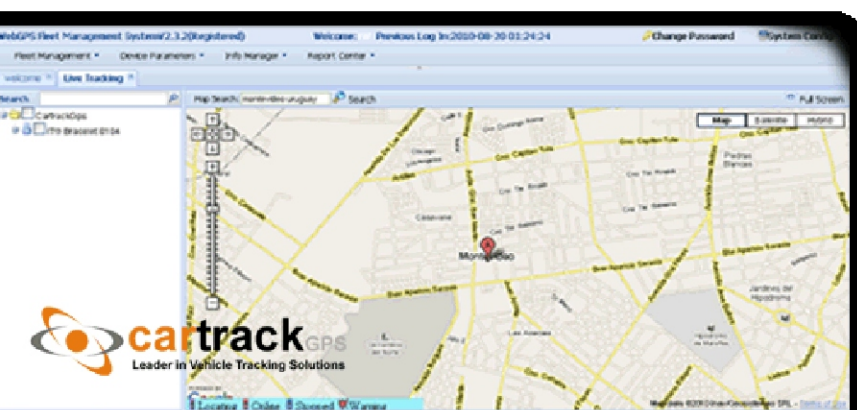
FUNCTIONALITIES

- SMS y GPRS TCP/UDP Communication.
- Location on demand.
- Location displayed directly on the cellphone.
- Tracking per time intervals.
- Hearing mode (Remote voice hearing) (Optional)
- No GSM coverage memory.
- Logging capacity, over than 180,000 location points.
- Motion sensor included for power saving.
- Panic Button.
- Motion Alarm.
- Geofence Control.
- Low battery alarm.
- Overseed alarm.
- No GPS coverage alarm.
- Power off alarm.
- Engine block.
- I/O: 4 digital inputs; 4 digital outputs.
- Analogue Input: 4 analogue inputs of 10 bits resolution to connect fuel sensors or other sensors.
- JPEG Cammera connection.
- RFID Application.

TECHNICAL DETAILS

- Power Consumption: +9V - +36V / 1.5A
- Back up Battery: 850mAh
- Normal Power Consumption: 85A/h
- Dimensions: 104mm x 62mm x 24mm
- Installation Dimensions: 104mm x 83mm x 24mm
- Weight: 190g
- Operation Temperature: -20° to 55° C
- Humidity: 5% to 95% non-condensing humidity
- Frequency: Quadband GSM 850/900 - 1800/1900Mhz
- GPS Module: Last GPS SIRF-Star III chipset
- GPS Sensitivity: -158Db
- GPS Frequency: L1, 1575.42 Mhz C/A Code 1.023 MHz frequency.
- Channels: 20 tracking channels.
- Position accuracy: 10 meters, 2D RMS
- Speed accuracy: 0.1 m/s
- Time accuracy: 1 us GPS time synchronized
- Default Datum: WGS-84
- Reacquisition: 0.1 sec., average Hot start 1 sec., average, Warm start 38 sec., average, Cold start 42 sec., average
- Altitude limit: 18,000 meters (60,000 feet) max.
- Speed Limit: 515 meters/seconds (1000 knots) max.
- LED: 2 LED to indicates the GPS/GSM status.
- Flash Memory: 4MB
- Buttons: One S.O.S button
- Interface: 4 digital inputs; 4 anlogue inputs ; 4 outputs.

WEB TRACKING



LCD with MESSAGING

Overview

The LCD is a Mobile Data Terminal (MDT) to work with GPS ITrackPro ADVANCE, for communication via voice and SMS. It works as a visible interface of GPS AVL, its major functions are send and receive SMS, read SMS, handsfree dial/receive phone call, vehicle dispatch, guard and withdraw. Supports easy, safe and intuitionistic operation.

Technical Parameter

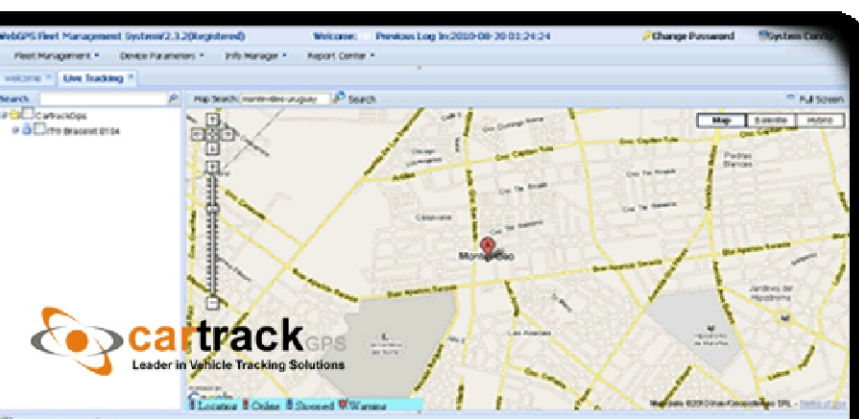
- Displaying and technical parameter lattice: 192 (line) x 64 (row)
- Dutyfactor: 1/64
- Contrast adjustment: manual and stepless
- Visual angle: 6 o'clock direction
- Background color: Blue / Yellow (optional)
- Operation way: Infrared remote and keyboard
- Infrared remote distance: 3m up
- Comm port: RS232
- Baud rate: 19200 (standard)
- Voltage: 4.5-5.5V DC
- Operation current: <100mA
- Operation temp.: -10C to +55C
- Storage temp.: -25C to 60C
- Humidity: 5% to 95%
- Display Visual Range Size: 39 mm X104mm
- Display dot pitch: 0.508mm X 0.508mm
- Display dot size: 0.458mm X 0.458mm
- Product size: 166mm X 80mm X 30mm

Functions

- Location status display: GPS signal
- Comm status display: GPRS signal
- Input type: character, symbol and handwriting.
- SMS saving: root SMS 99 + composing SMS 20 + Received SMS from monitor center 20+ Received SMS from cellphone 20.
- Call records: dial out 20 + received call 20 + missed call 20.
- Contacts: 160 contact info
- Group call: 243 contacts
- User download the fixed the information: Wireless download user-defined signaling information.
- Auto-Dial function: preset according to client's request.
- Call limit: user-define or preset before ex-factory.
- Incoming call display, ring: display incoming call with ring.
- Shift: shift in between handsfree and LCD in calling.
- Ring choose: 5 different ring is available.
- Built-in speaker: with earset handsfree and built-in speaker.
- Sign in/out: supports sign in/out.
- Security: auto-lock car door when parking.
- GPS ALV re-programming: through LCD to re-program GPSADVANCE.



WEB TRACKING



Additional Accessory

Camera

The iTrackPro ADVANCE device has 3 serial Rs232 port, can be used to work with camera, mobile data terminal/car handle, LED advert board.



Car Handle

The car handle can connect to the iTrackPro ADVANCE and display the messages from server. The keyboard of car handle can edit message to server and send it to server through GPRS.

User can make the call by pressing digital number and then press green button. Using it you can receive the call by pressing the green button too.



ALARMS

Panic Button

When panic button is pressed, the iTrackPro ADVANCE will send the event through GPRS data to the server.

External Power Cut Alarm

When external power is cut, the iTP Advance will send the GPRS data event to the server with "external power cut alarm" information.

Over Voltage Alarm and Low Voltage Alarm

At the time of external power is higher than 32V or lower than 8V, the iTP Advance will send the event through GPRS data to the server. The information displayed will be "over voltage" and "low voltage".

OverSpeed Alarm

When the speed is higher than preset one, the device will send the GPRS data to the server with the information: "overspeed".

Park Alarm

When the vehicle is parked, the iTP Advance will send the event through GPRS to the server.

GeoFencing Alarm

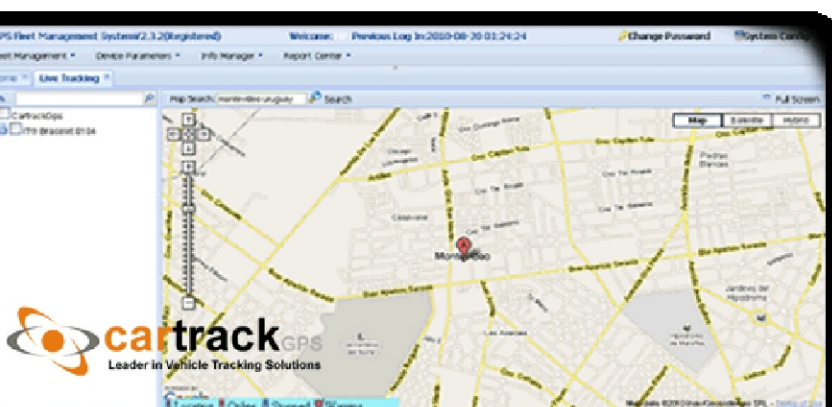
The alarm is triggered at the time of iTP Advance leave a preset region. The data will be sent through GPRS to the server.

Alarm when Fatigue Driving

When driver work overload, the device will send the alarm through GPRS to the server.

Fuel Level Alarm

If the vehicle is parked, but the fuel is dropping, the device will send the alarm through GPRS to the server.



OUR PROFILE

We are a company pioneer in GPS system integration and software development for vehicle location worldwide. We have a wide tracking solution range, from 1996, year on which we started manufacturing national level (Uruguay), all kinds of GPS devices for tracking through AMPS and CDPD cellular technology, that was the ones that led the market in that time.

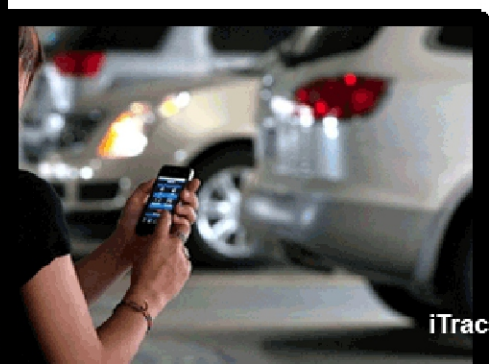
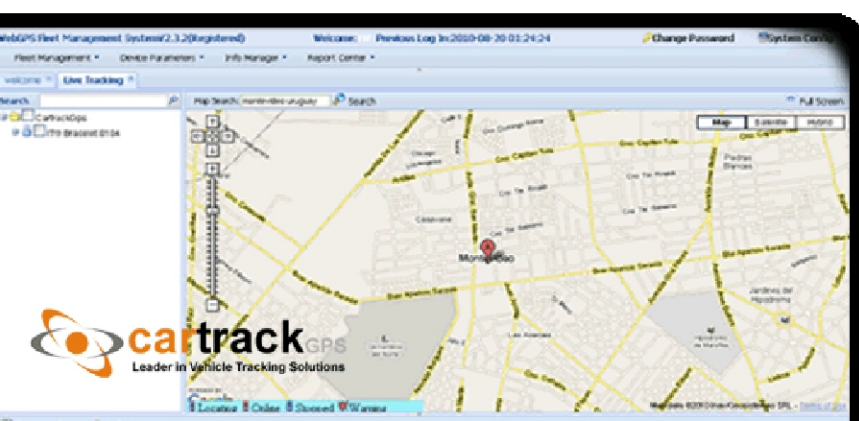
We export tracking solutions to 100 countries, and finally to get the costs lower, we manufacture our own equipments directly in Asia – to which we configure the firmware (the “brain”) totally designed in Uruguay.

This mean that the technology is created 100% by uruguayan technicians, meanwhile manufacturing is done with high qualities norms and more competitive prices - that is the advantage that has hiring the offshore components assembly, as well as to minimize errors and factory failure to 1 thousand rate.

We offer our high qualified and multidisciplinary staff, who are the ones that are in charge of sales and setting up – as we think that those who establish first contact with the client and advice as well, must deepen their relationship and responsibility to client always. This way lasting relationships are established, on which fast response to clients are guaranteed on matters to failure or incompatibility or to possible new accessories integration and adaptation, as well as to create a system according to clients need.

The fact of offering a turnkey solution makes us to improve our service, as we need always to overcome and continue marketing in order to continue within the market. We focus on the prodcut and we dont charge for technical support, this is why we think that we provide a perfectly profitable equation – which provide reliability and minimize monthly costs from our clients.

We are located in the central area from Montevdieo, Uruguay, and our worldwide approach has been mainly through internet; until the current date we have sold over than 50.000 units, existing a huge demand in the last years, in regards of the GPS Solutions markets.



TO CONTACT US

CartrackGPS

- Tel.: +598 2401 0444
- Tel.: +1 305 328 3889
- Tel.: +1 305 424 1494

info@cartrackgps.com

www.cartrackgps.com